

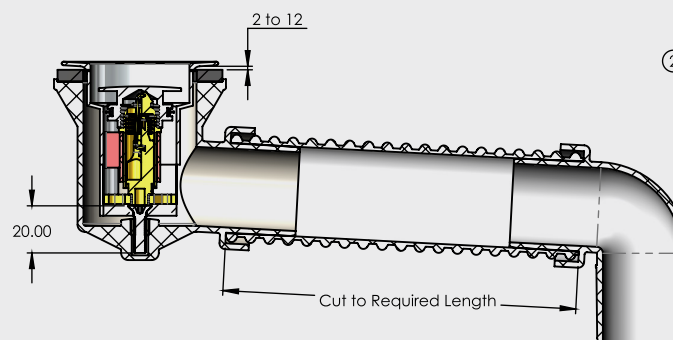
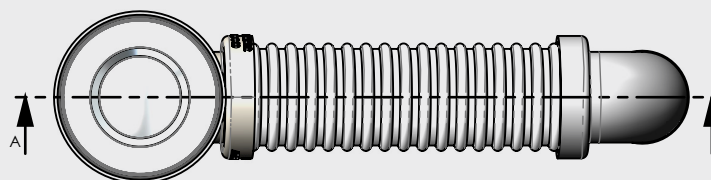


BATH BEND POP DOWN WITH CONNECTOR™

PLUG & WASTES

- Flexible connector
- Low height body 77mm
- Adjustable length to maximum 600mm
- Adjustable bath thickness to 12mm

| CODE | OUTLET SIZE | FINISH | CARTON QTY |
|----------|-------------|--------|------------|
| 21831.01 | 40mm | Chrome | 10 |



SECTION A-A

| ITEM NO. | PART NUMBER | Notes | QTY. |
|----------|---------------------------------|----------|------|
| 1 | 200151 Bath Popdown Outer Body | New Tool | 1 |
| 2 | 100084 | | 1 |
| 3 | 200150 Bath Pop Down Inner Body | New Tool | 1 |
| 4 | 200152 Double seal | New Tool | 1 |
| 5 | 94020 | | 1 |
| 6 | 100149 | | 1 |
| 7 | AS-NZS 1023 CC- M5 x 20-S | M5 x 20 | 1 |

NOTE:
FIXING SCREW (7) MUST BE STAINLESS STEEL, M5 COUNTERSUNK HEAD. REPLACE WITH DIFFERENT LENGTH OF SCREW FOR DIFFERENT BATH WALL THICKNESS. REFER TABLE BELOW:

| BATH WALL THICKNESS | S/S SCREW C/SUNK HD |
|---------------------|---------------------|
| 0 - 12 mm | M5 x 20 (SUPPLIED) |
| 12 - 22 mm | M5 x 30 |
| 22 - 32 mm | M5 x 40 |
| 32 - 42 mm | M5 x 50 |
| 42 - 52 mm | M5 x 60 |
| 52 - 62 mm | M5 x 70 |

